

UGLY STUFF

©Funny studio





contents page

Mission Statement

Synopsis

Story treatment

Sustainability

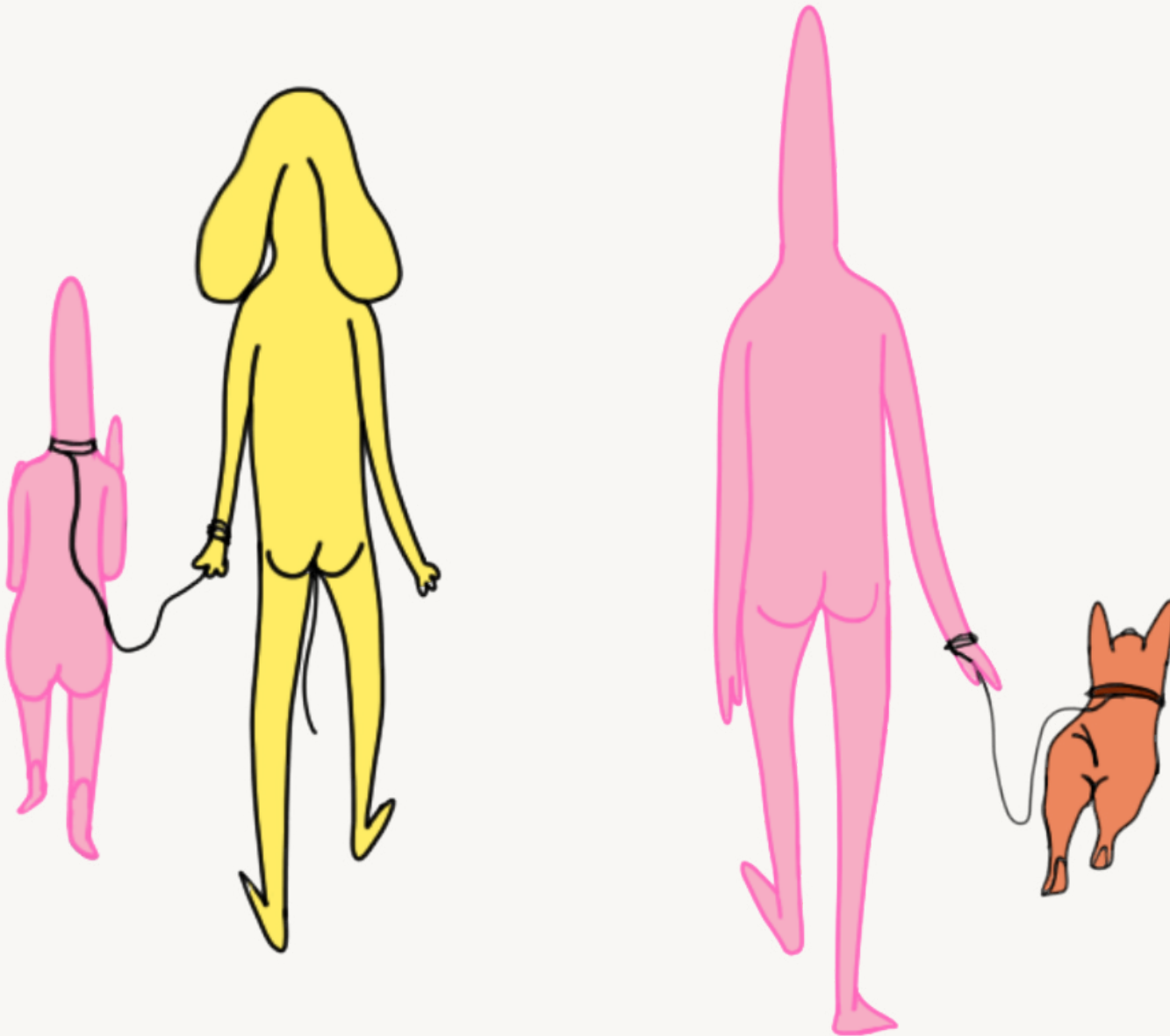
Format

Character

Concept art

Budget

Biography



Mission statement

We hope that people will watch this work with a relaxed mind and that they will have something to think about afterwards. Trying to make something dark and humorous.



short synopsis

It is the social development process of a race named Pinky and some phenomena from the perspective of individuals and society.

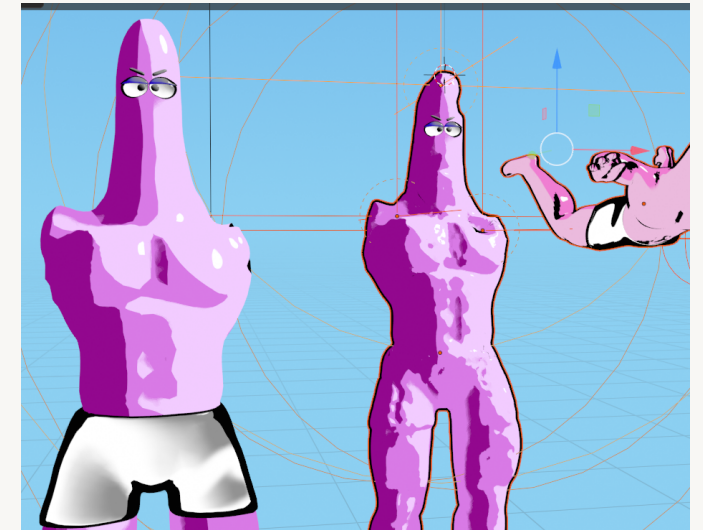
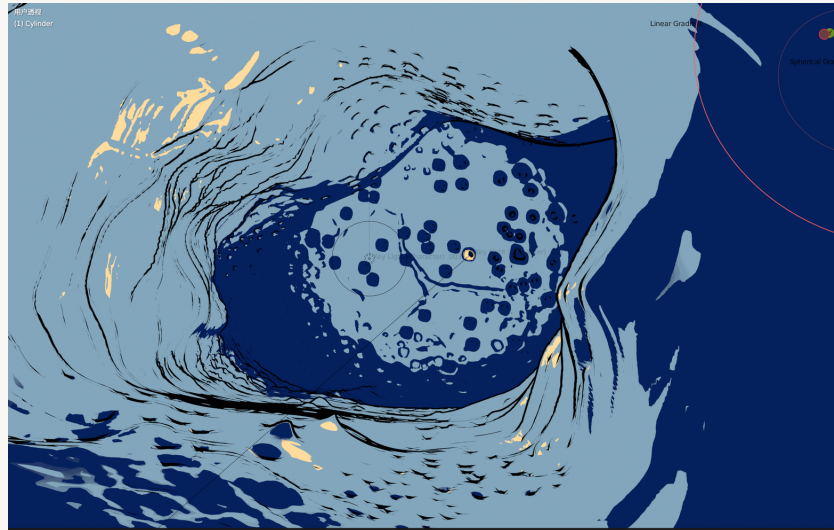
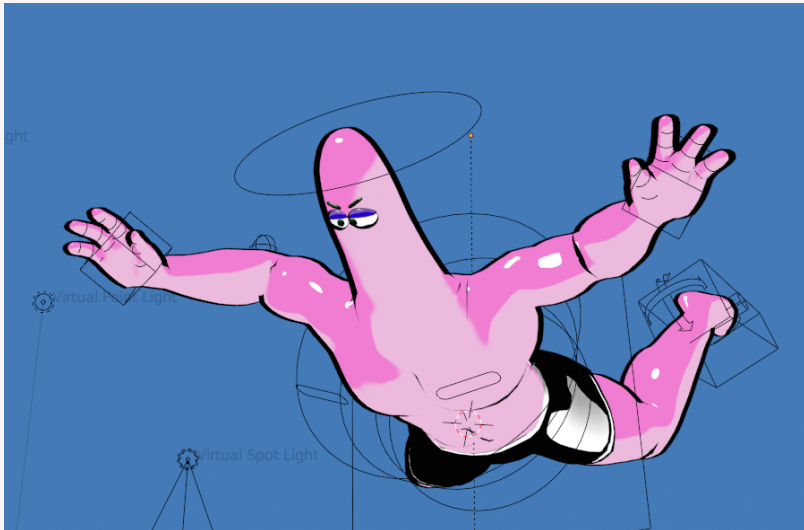


story treatment

This work consists of several parts through a long dimensional chronology, these themes are future humans coming on an expedition to a primitive planet, seeing Jesus at work in a cave, and our consciousness following the life of the humans Jesus is watching seeing humans leading dogs and dogs leading people. After seeing the way in which humans reproduce in a perfunctory form. We see the human being's claim to self which is the quest for muscle. Finally we return to primitive society. And find that they had the same worries and consciousness as we do.

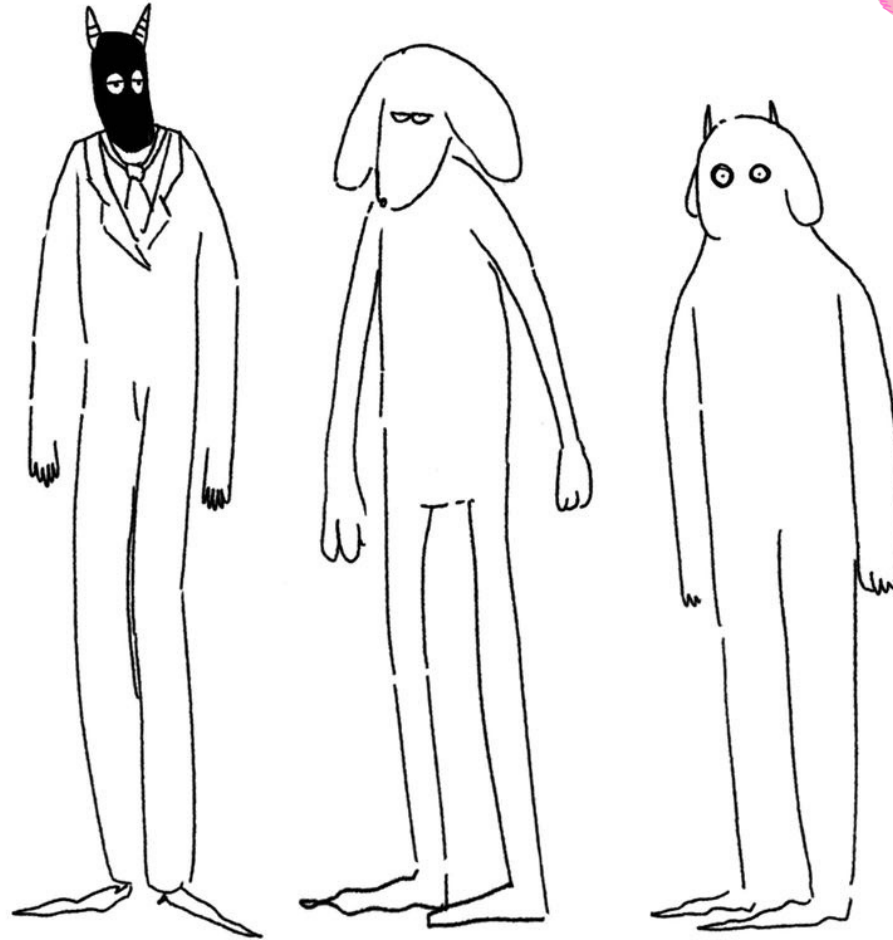
Format

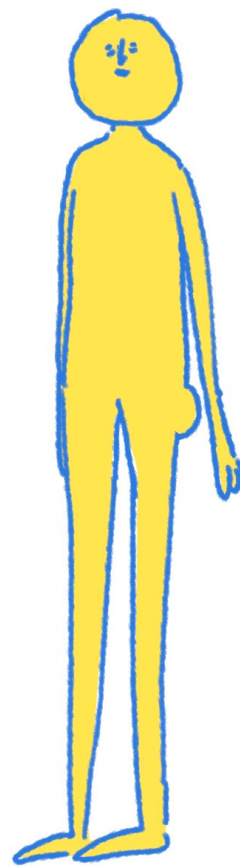
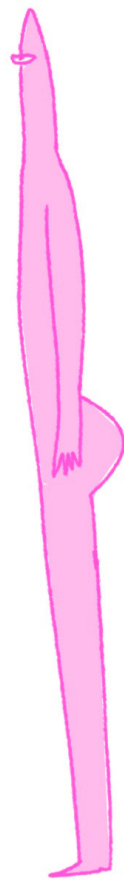
We used a combination of 2D animation and 3D animation to complete the piece.

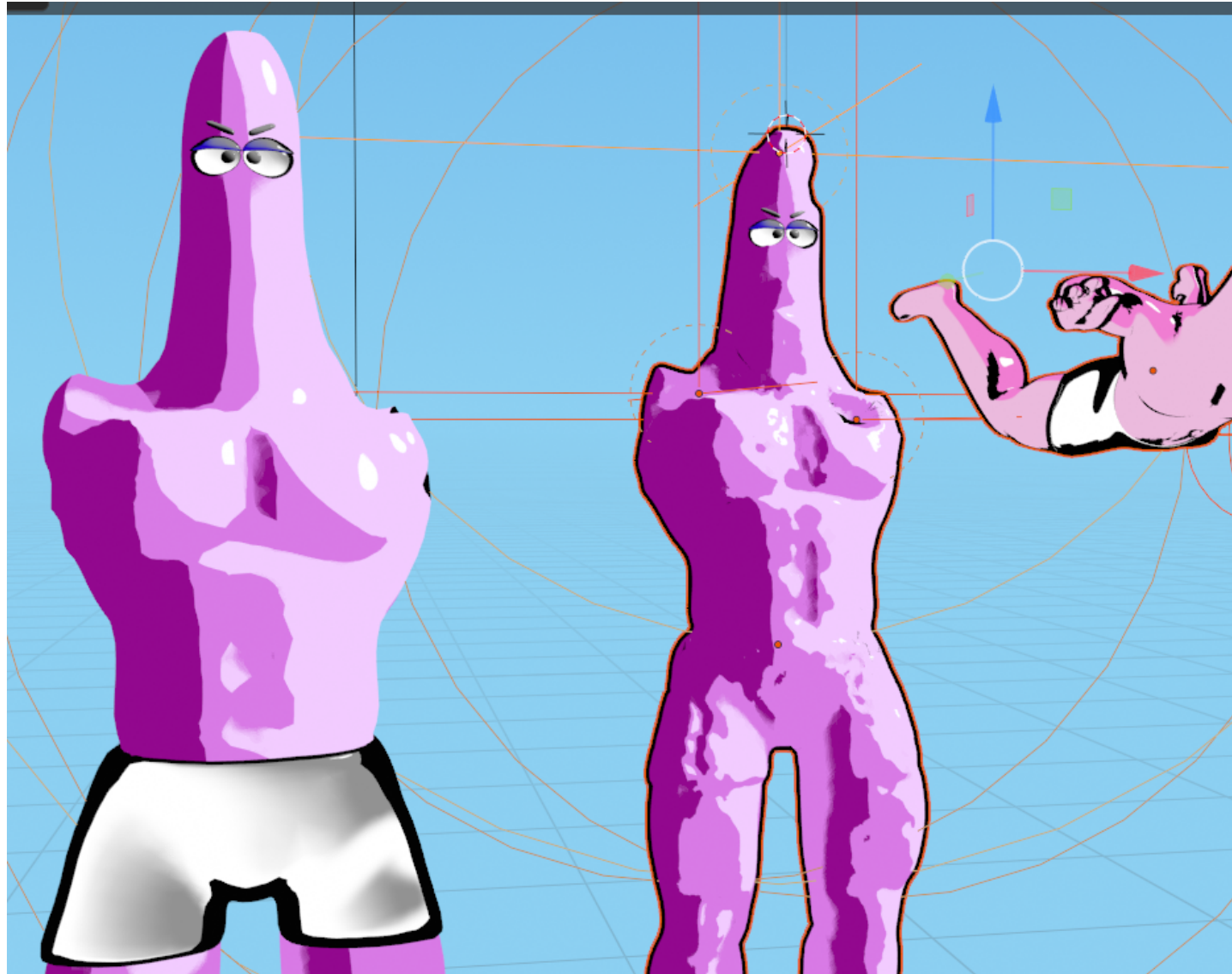




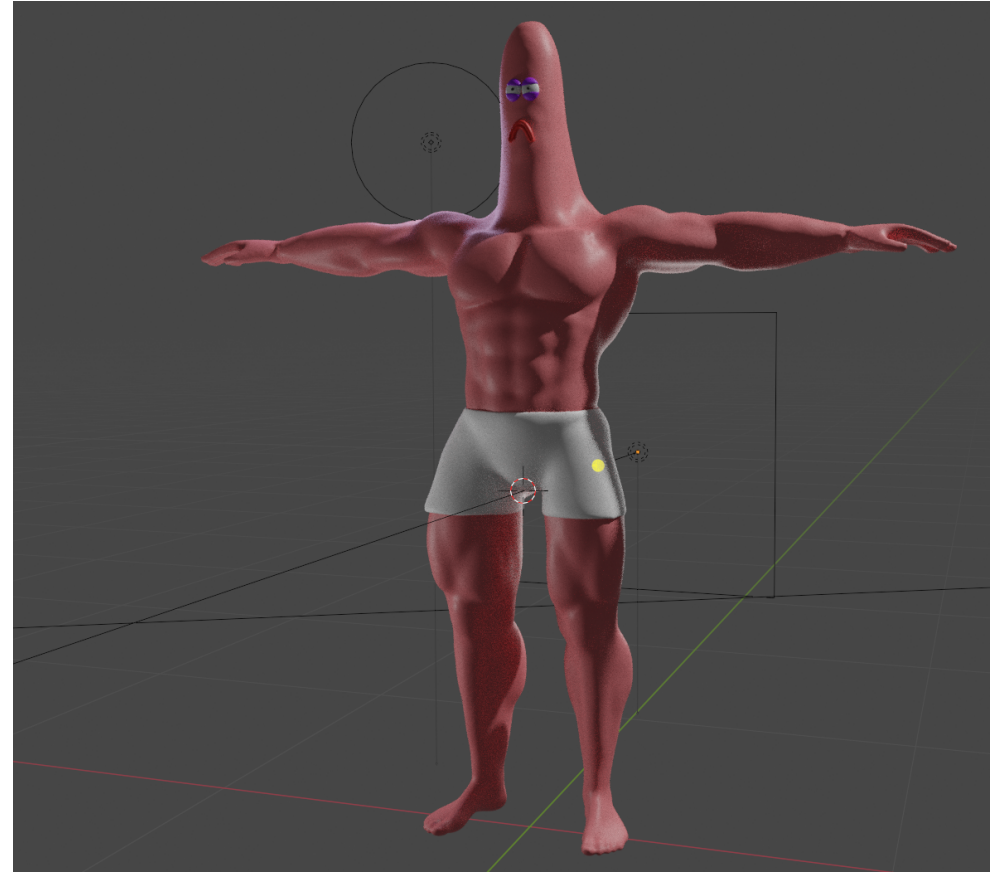
character designs and profiles



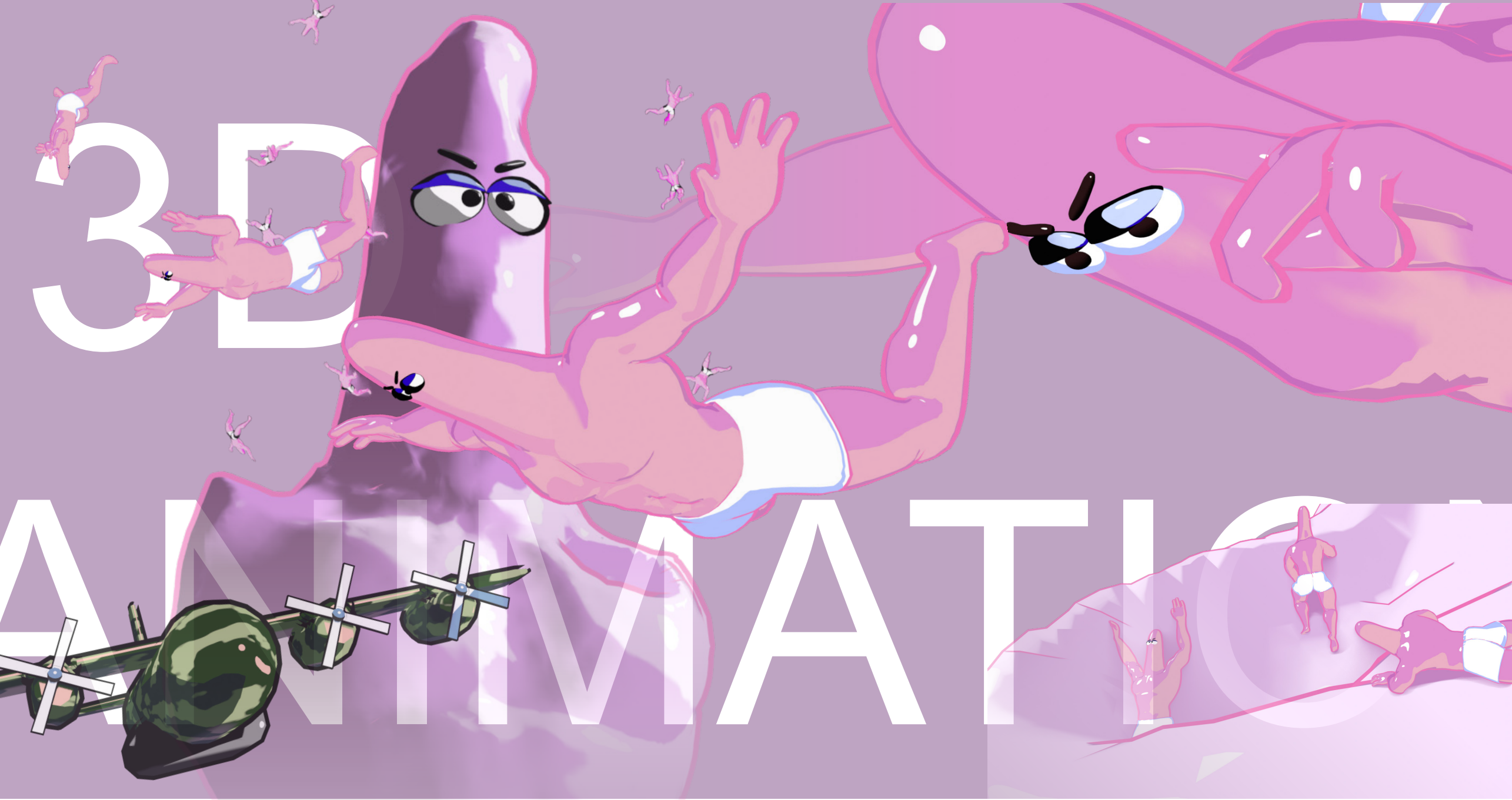




character designs

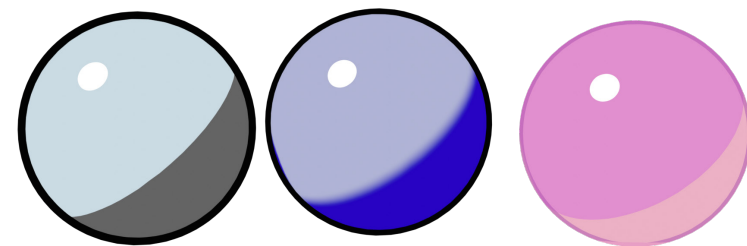
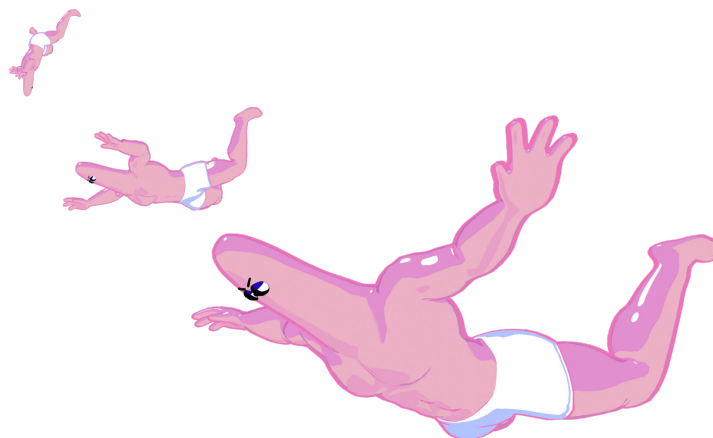


3D Models

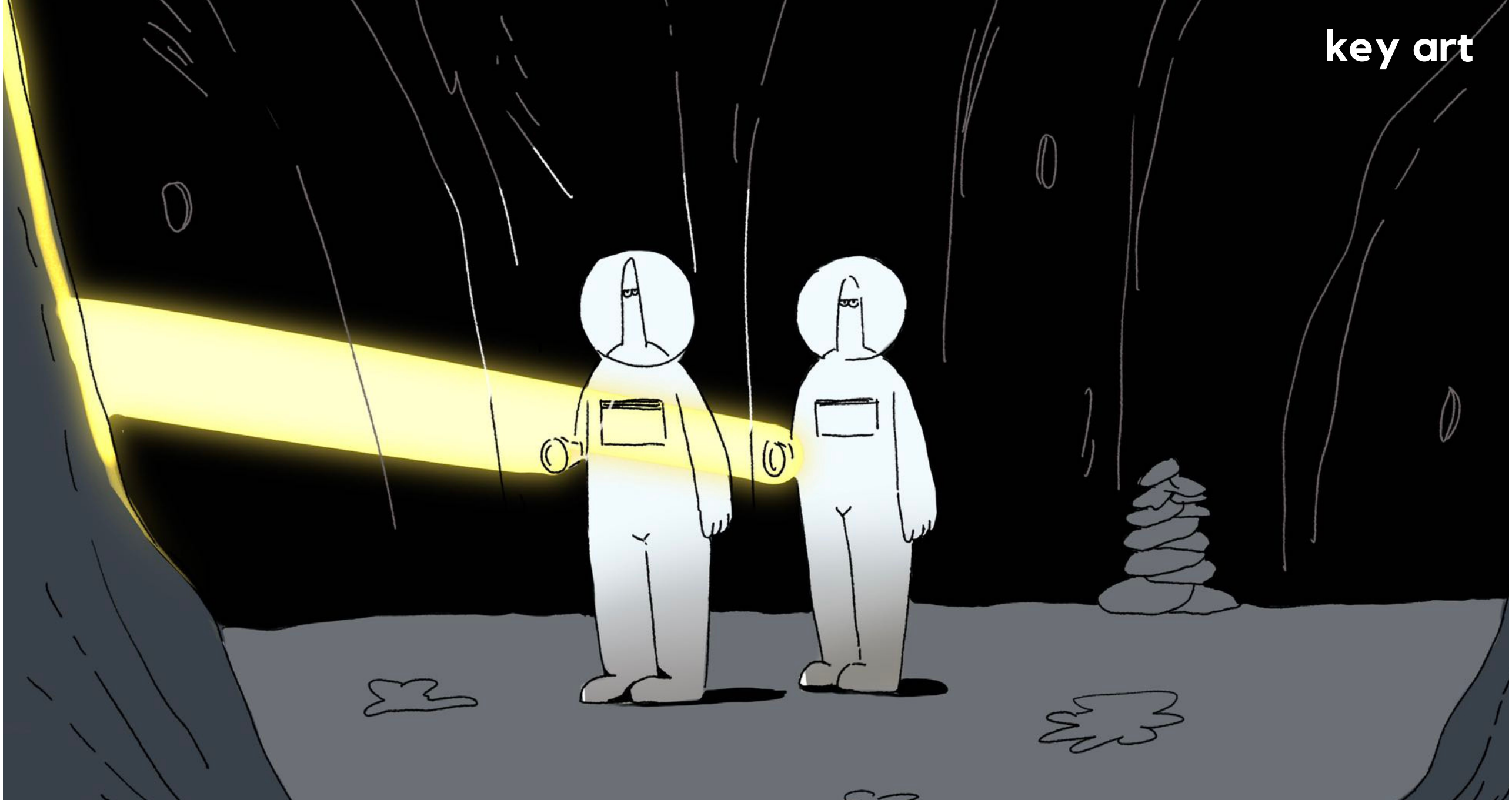


3D

ANIMATI



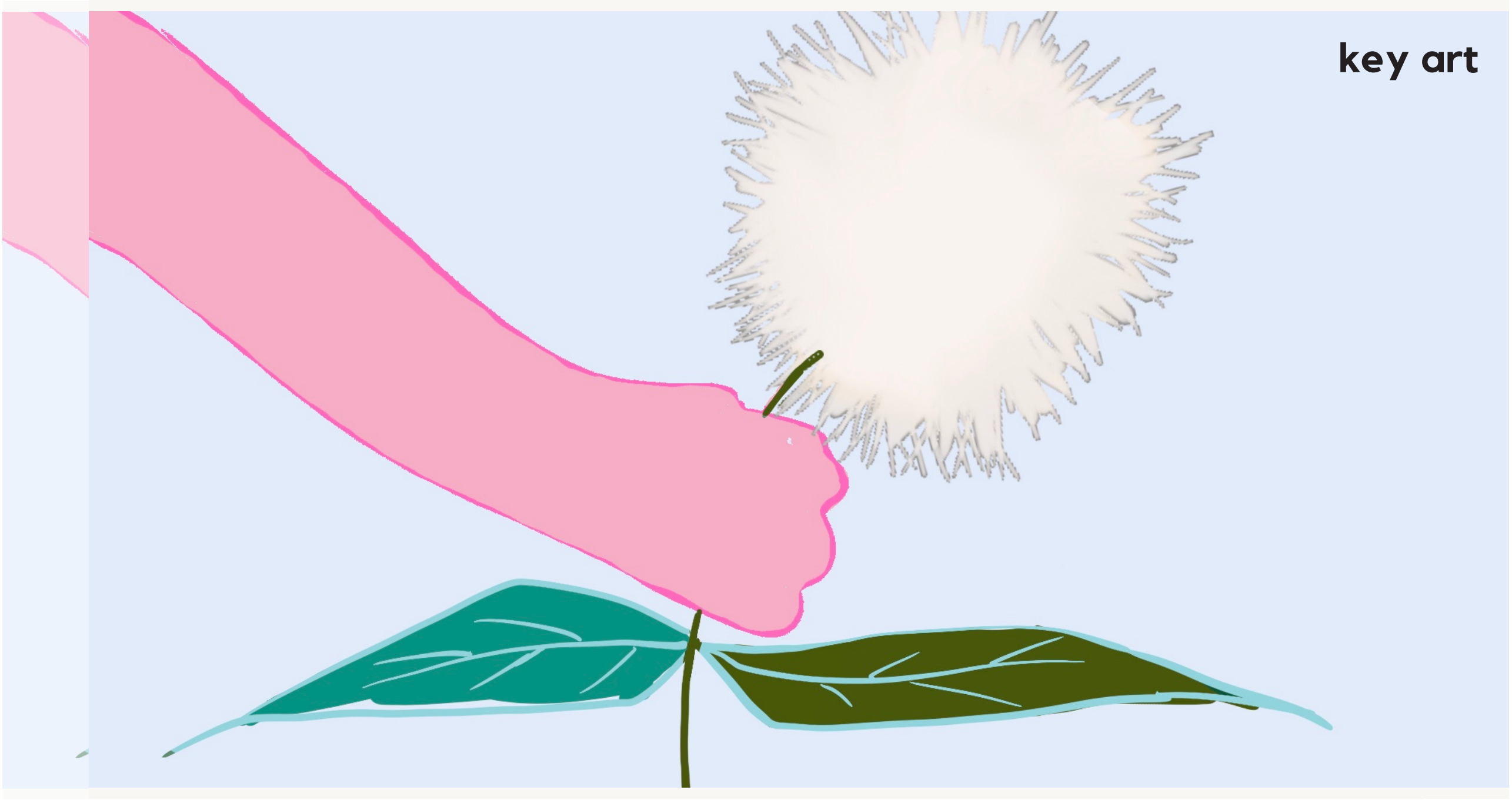
key art



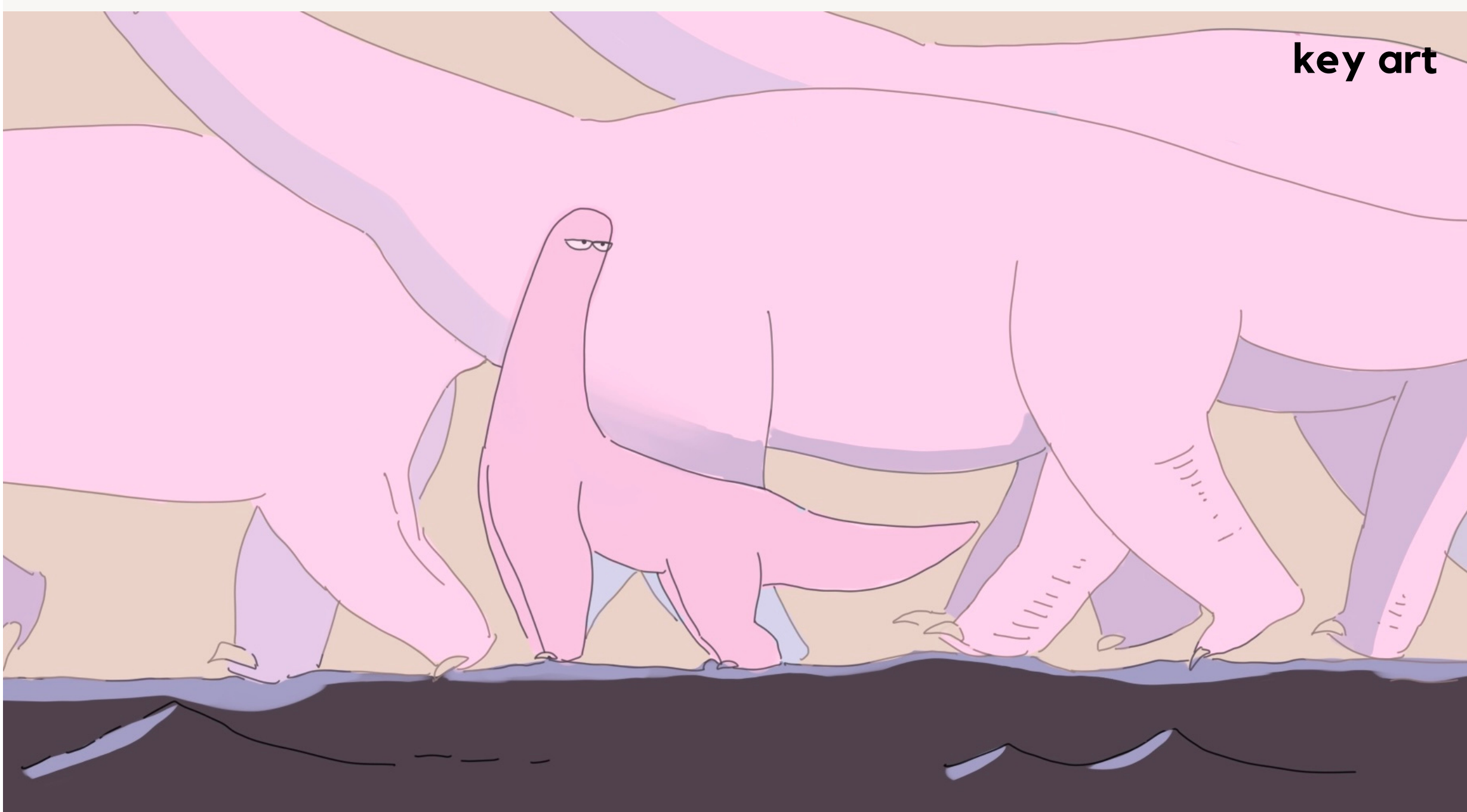
key art



key art



key art

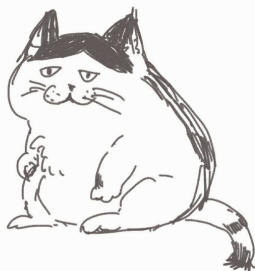


Sinead Peng

Ins:
liujingsinead

email: pengxinhui329@gmail.com

2D animator, photographer and
character designer

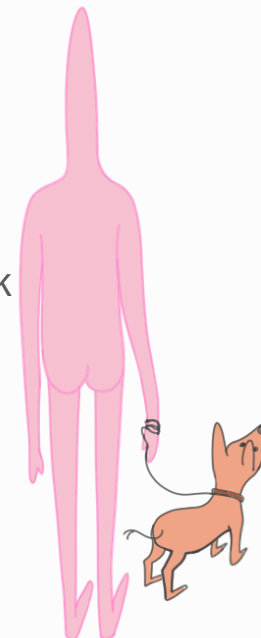


Bingfan Feng

Ins: miaaaa_feng
email: mashuiji@foxmail.com
2D Animator, illustrator

Zhiqian Huang

ins: xyymyyya
Email: z.huang0320225@arts.ac.uk



Xuyi Dai

Ins: domidxy
email: x.dai0320211@arts.ac.uk
2D Animator, illustrator



Gavin

- A mystery man

3D animator, character designer

Thank you

biography and contact information